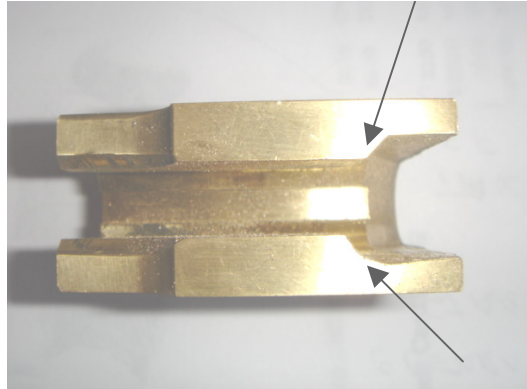


'66 & '73 Original Brass Carrier Modification



Original brass carrier

If you are installing our short stoke kit and you have an original brass carrier, you will need to modify it. Use a dremel tool (or equivalent) to take a small amount of material off the areas that the arrows point to in the picture. Both sides should look like the one on the bottom (cut out and rounded).

Cowboys and Indian Store, LLC Santa Ana, CA 714-210-2720