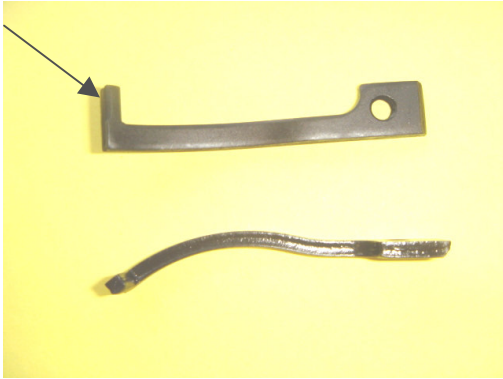
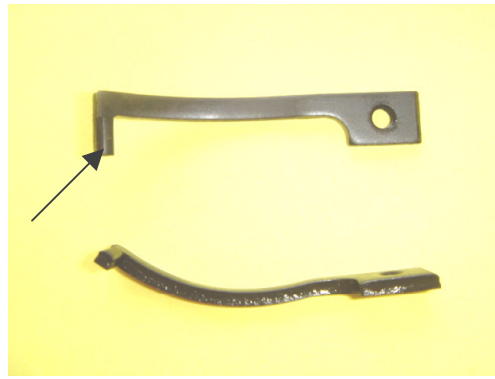


Fitting instructions for '66 & '73 lever and carrier springs



Lever spring



Carrier spring

After installing the spring, put the side plate cover on the rifle. If it won't fit correctly without binding up, use a Dremel tool (or equivalent) to take a small amount of material off the areas that the arrows point to in the pictures. The approximate finished size for '66 is .330 and for the '73 is .340.

Cowboys and Indian Store, LLC Santa Ana, CA 714-210-2720